



Scan me

UPDATE ON CORONAVIRUS (COVID-19) JULY 2020



Summary of Coronavirus outbreaks

Approximately five months after the World Health Organization, declared the Covid-19 a pandemic, caused by the new coronavirus (Sars-Cov-2), the number of confirmed cases continues to rise up worldwide. The COVID-19 outbreak has plunged the world economy into a recession with the potential of deep consequences and historical levels of unemployment and deprivation.

As of July 13th, Statistics from the World Health Organization (WHO) show that there are 13 million confirmed cases, including 573, 102 deaths caused by COVID -19. Over 7 million out of the infected people have already recovered from the virus.

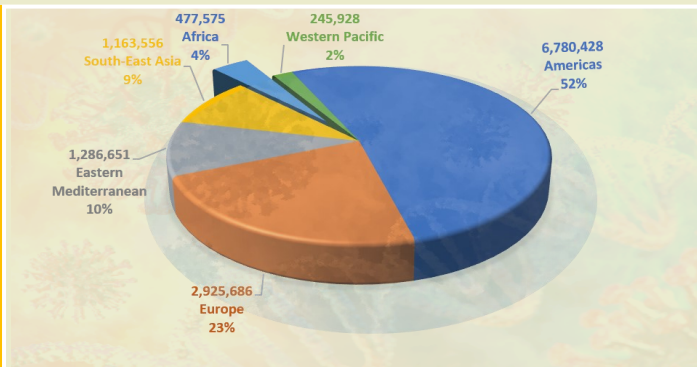
The COVID-19 outbreak has now affected over 188 countries and territories. Currently, the American continent is one of the most affected by COVID- 19, in terms of confirmed cases. Over 6,6 million confirmed cases were reported correspond to 52% of the total cases globally, followed by the European continent with 2,925,686 confirmed cases corresponding to 23%.

The most affected countries in terms of confirmed cases are United States with (3.4 million) and Brazil (1.8 million) standing out with the highest number of confirmed cases.

Regarding registered deaths, the United States still has the highest number of deaths (135.615) followed by the Brazil with (72.833)

Figure 1: Number and percentage of confirmed COVID-19 cases according to WHO.

Situation by WHO



Data source: World Health Organization. <https://who.sprinklr.com/>

COVID-19 in Africa

The WHO for African region statistics dashboard, showed as of 13th July 2020, Over 594,000 confirmed COVID-19 cases, over 298,000 recoveries and 13,000 deaths were reported.

South Africa remains with the highest number of confirmed cases (287,796 cases), Egypt (83,001 cases), Nigeria (33,153 cases), Ghana (24,988 cases), Algeria (19,689 cases), and Morocco (15,173 cases) .

Death reports indicate, South Africa (4,172) followed by Egypt (3,935) and Algeria (1,018) are the countries most affected.

In East Africa including the Kenya (10,294) and DR. Congo (8,074) have recorded the highest number of confirmed COVID-19 cases followed by Rwanda (1,378), South Sudan(2,148) and Tanzania (509).

COVID-19 outbreak in Uganda

On July 12th, the Ugandan Ministry of Health confirmed 1, 025 total cumulative cases of COVID-19 in the country as detailed below.

- 12 new COVID-19 cases have been confirmed. The cumulative total confirmed cases of Ugandans are now 1,025
- 7 truck drivers; 5 from Malaba, 2 from Mirama Hills and Elegu
- 5 Alerts and contacts: 2 from Tororo, 2 from Lira, 1 from Cyanika
- 17 foreign truck drivers tested positive for COVID-19 at the border points of entry and their entry into the country was not permitted
- Total Recoveries: 972 (Includes both Ugandans and Foreigners)
- Samples from Points of Entry tested on July 12th 1,794
- Samples from alerts and contacts: 498
- Total samples tested on July 12th : 2,292

Statistical analysis of the data available on the Ministry of Health website shows that over 90% of confirmed cases have already recovered.

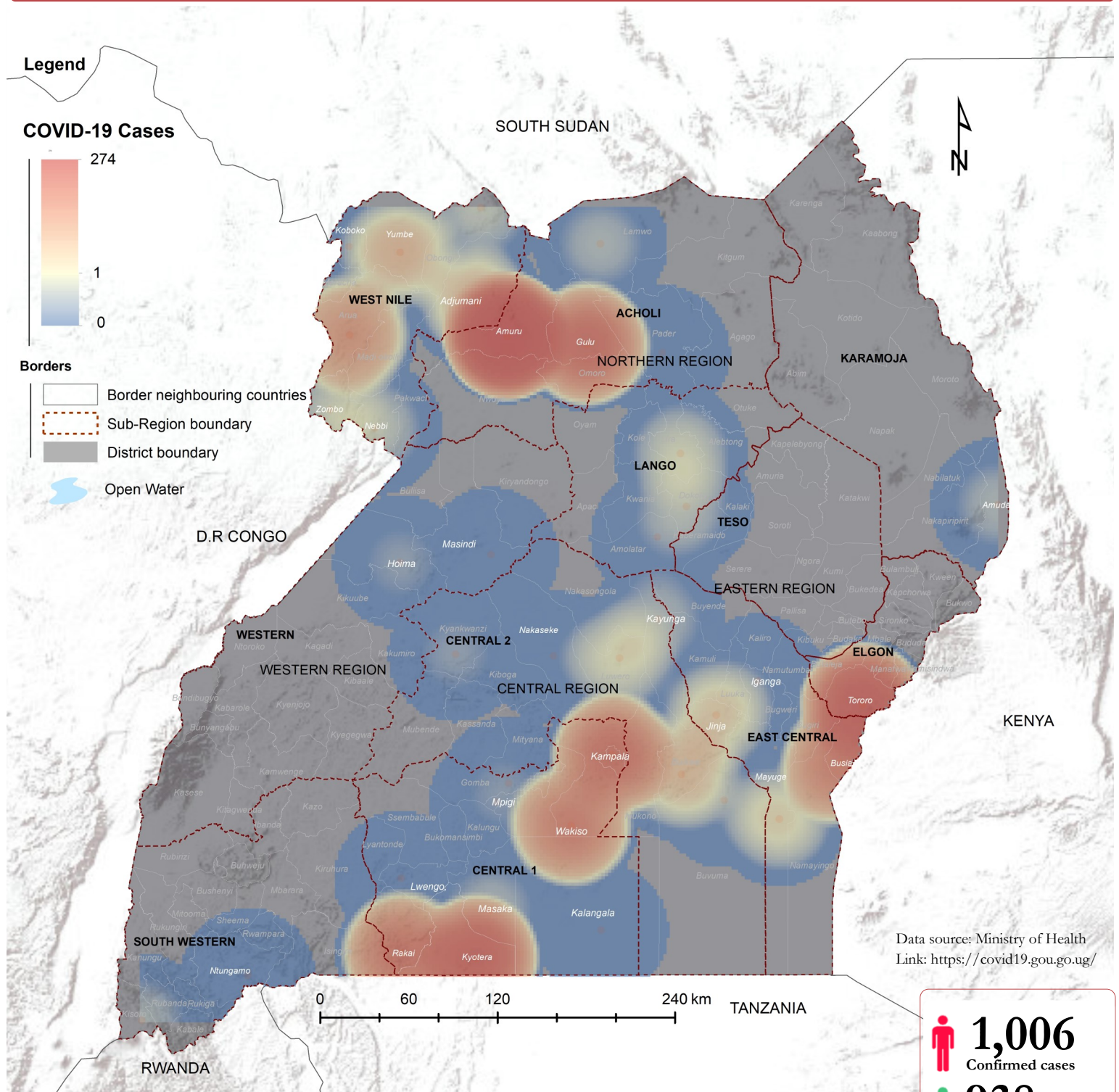
Since June, the government has been repatriating Ugadians who are in several countries and want to return to the country.



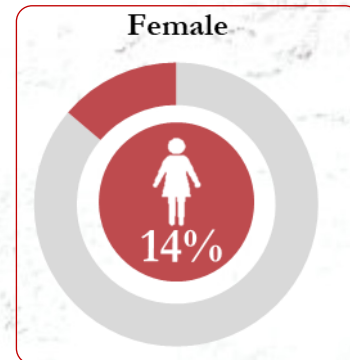
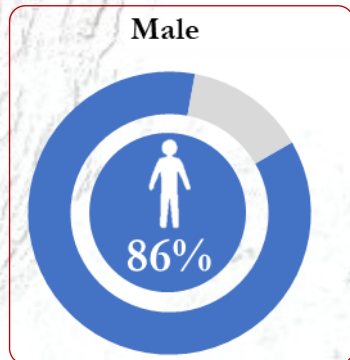
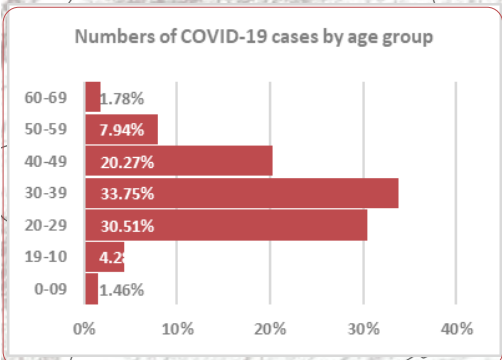
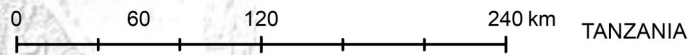
U - NEWS

Uganda National Integrated Early Warning System – Monthly Bulletin

UPDATED STATISTICS COVID-19 (JULY 12th 2020)



Data source: Ministry of Health
Link: <https://covid19.gou.go.ug/>



- 1,006** Confirmed cases
- 938** Recovered
- 0** Deaths
- 1,68** In Quarantine
- 570** (Additional statistic)



U - NIEWS

Uganda National Integrated Early Warning System – Monthly Bulletin

CROP & PASTURE CONDITIONS MAP OF UGANDA (July 2020)

Crop and Pasture Conditions

Conditions:

Favourable: Conditions range from slightly below to slightly above average.

Watch: Conditions are not far from average, with potential production risk

Maize



Sorghum



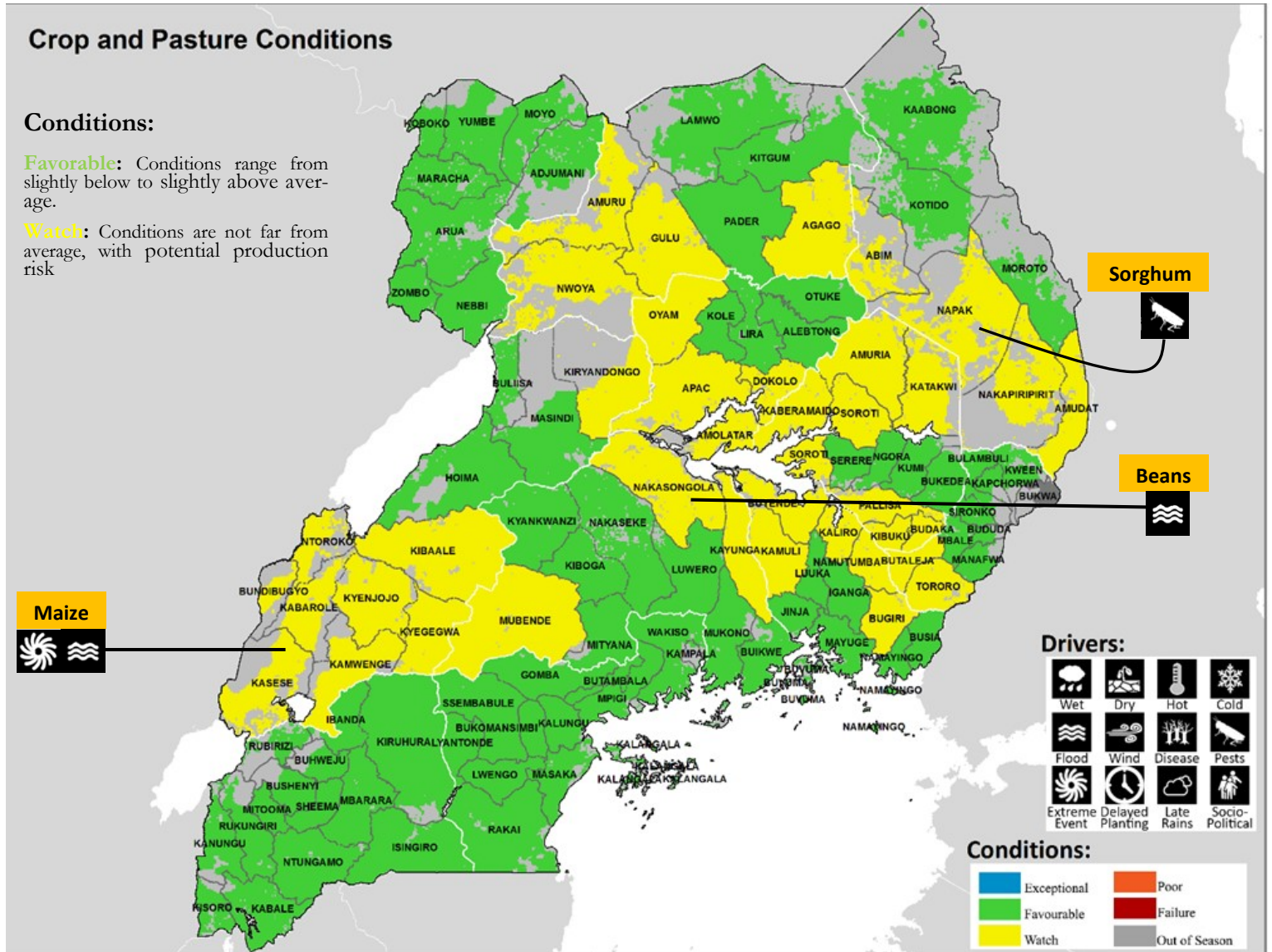
Beans



Drivers:



Conditions:



Source: Crop Monitor of Uganda. This crop conditions map synthesizes information for selected crops and pasture as of 09th July 2020. Crop conditions over the main growing areas are based on a combination of national and regional crop analysts' inputs along with remote sensing and rainfall data.

Early Warning for Regions!

Elgon, Central 1, West Nile, and South Western: Favourable crop conditions persist in the regions due to extended May-June rainfall. Crops especially maize across the regions have reached maturity stage. Harvesting of the first season is underway.

Central 2: Favourable crop conditions exist except for Nakasongola, Mubende and Kayunga districts that are under watch. The increase in water levels of L. Kyoga caused waterlogging conditions in districts thus the observed watch conditions. Harvesting of major crops is underway.

Karamoja: Watch crop conditions persists across the region with translation to favourable in districts of Kaabong, Kotido and Moroto. Land preparation activities are ongoing as JJA rainfall fully onsets. Farmers are advised to keep alert of any suspected cases of both desert locusts and COVID-19.

Early Warning for Regions!

East central, Teso and Lango: Watch crop conditions exists except for districts of Busia, Jinja, Namayingo, Iganga and Mayuge in East Central; Serere, Ngora, Kumi and Bukedea in Teso; and Kole, Lira, Albetong, and Otuke in Lango sub regions that are under favourable. Waterlogging conditions and floods due to above average rainfall in April-May largely account for the observed conditions.

Western: Favourable crop conditions persist across the region except for districts of Kasese, Bundibugyo, Ntoroko, Kibaale and Kabarole that are under watch. Widespread floods due to bursting of riverbanks including Nyamwamba, Lhubiriha, Nyamugansani and Thaku could result into overall below average harvest of the MAM season.

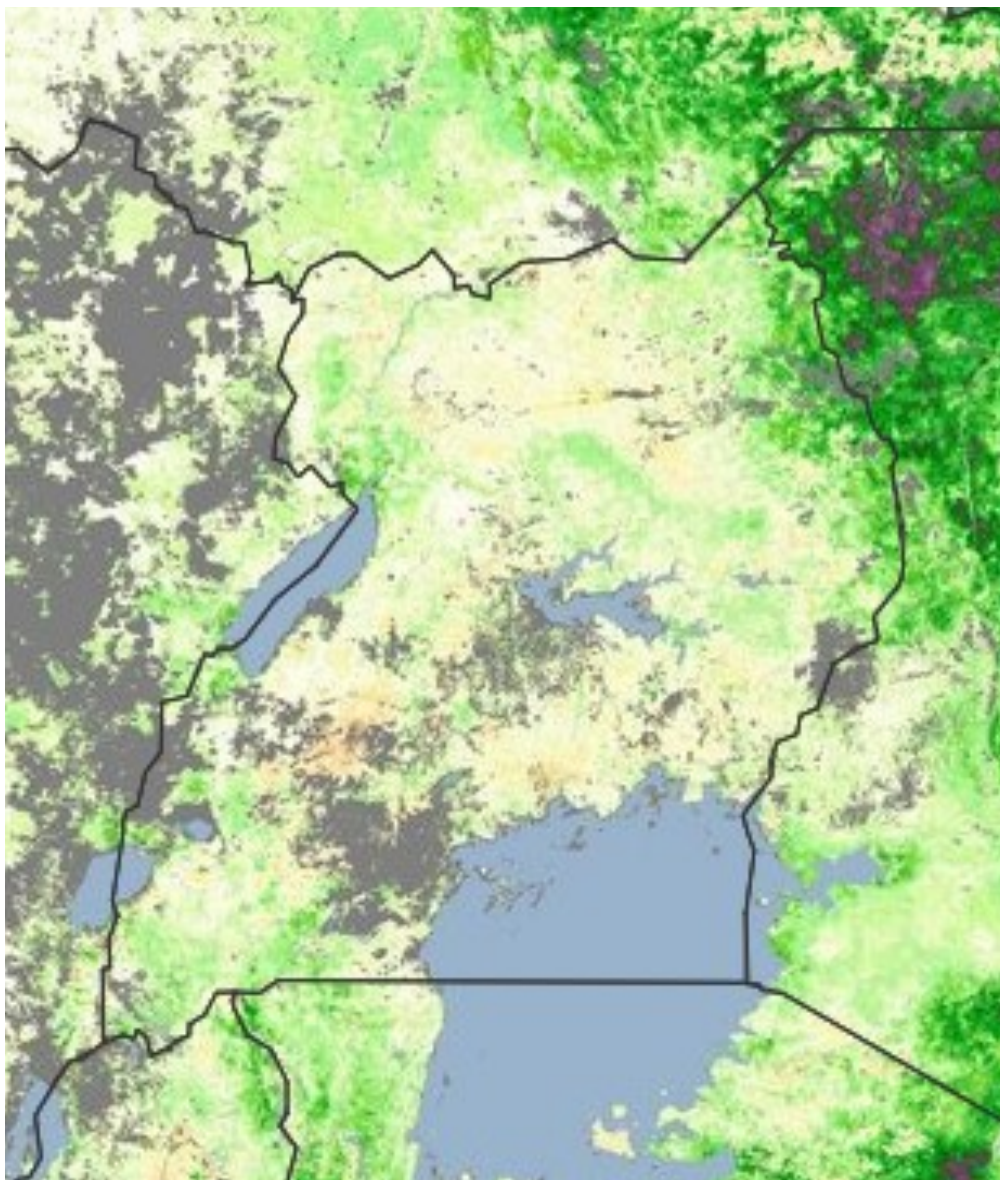
Acholi: Translation from favourable to watch crop conditions in districts of Nwoya, Gulu, Amuru and Agago has been recorded a result of extended erratic local rains in the region. However, harvesting of major food crops especially sorghum and maize has commenced.



U - NIEWS

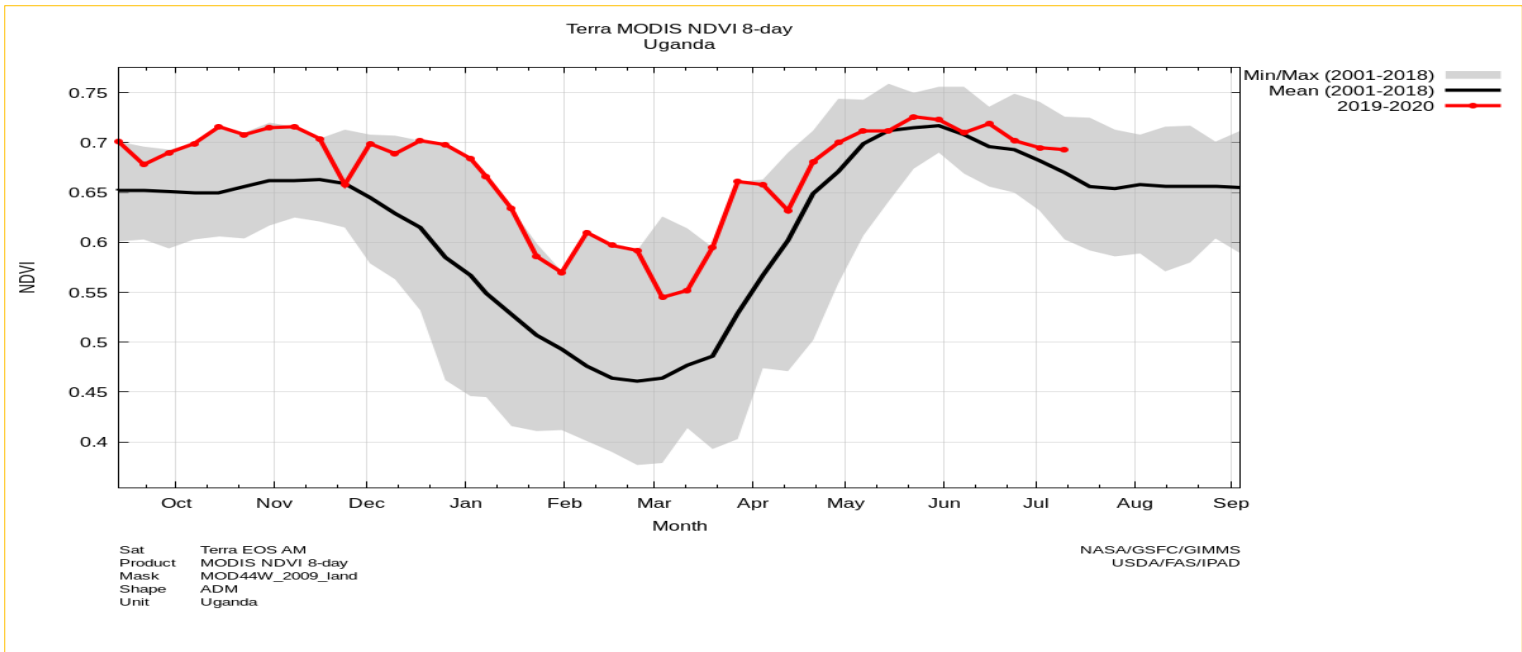
Uganda National Integrated Early Warning System – Monthly Bulletin

HIGHLIGHTS—NDVI ANOMALY (JULY 03th TO 10th JULY 2020)



For the period of 03th July to 10th July 2020, the Normalized Different Vegetation Index (NDVI%) anomaly figure show, the green color representing areas where conditions are “above normal.” The light green color representing areas where conditions are better than “normal”. The yellowish-brown areas represents areas where the vegetation conditions are near normal. Due to cloud cover, there was no data collected in the Gray areas.

The chart below complements the data represented in the figure showing the current vegetation conditions. The red line represents the average conditions and compares with the average conditions (black line) for the period (2001-2018). The grey area shows how values tend to spread from the mean (min/max). For the country as a whole, current conditions were aligned with the long-term maximum deviation from the above-average. From Mid-March to June, the graph show improving NDVI trend, and gradually dropping from late June likely due to decreasing rainfall.





JULY TO AUGUST 2020 SEASONAL RAINFALL OUTLOOK OVER UGANDA

Northern Region

North Western: (*Moyo, Yumbe, Adjumani, Arua, Maracha, Zombo, Nebbi, Madi-Okolo, Obongi, Pakwach, Koboko*) districts. Near normal with a tendency to above average rainfall conditions are expected.

Eastern Northern Parts: (*Lira, Kitgum, Agago, Lamwo, Otuke, Pader, Alebtong, Kole, and Dokolo*) districts. Near average with a tendency to above normal rainfall conditions are expected.

Eastern Northern Parts: (*Lira, Kitgum, Agago, Lamwo, Otuke, Pader, Alebtong, Kole, and Dokolo*) districts. High chances of Near average with a tendency to above normal rainfall are expected.

Central Northern Parts: (*Gulu, Apac, Pader, Nwoya, Amuru, Oyam and Kiryangongo*) districts. Near average with a tendency to above average rainfall are expected.

Western Region

Central Western: (*Bundibugyo, Ntoroko, Kabarole, Kyenjojo, Kyeggywa, Kamwenge, Masindi, Bulisa, Hoima, Kakumiro, Kagadi, Kikube and Kibaale*) districts. Near average rainfall is expected.

South Western: (*Kisoro, Kabale, Rubanda, Rukiga, Rukungiri, Kanungu, Ntungamo, Rvampara, Kaso, Mbarara, Kiruhura, Isingiro, Ibanda, Bushenyi, Buhweju, Mitooma, Sheema, Rubirizi, Kitagwenda and Kasese*) districts. Near average with a tendency to below normal rainfall is expected.

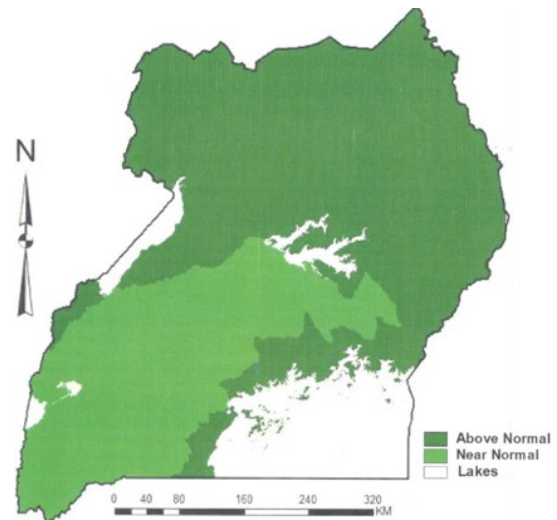
Lake Victoria Basin and Central Region

Northern and Southern parts of Central: (*Nakasongola, Luwero, Nakaseke, Kyankwanzi, Kiboga, Mubende, Kasanda, Sembabule, Lwengo, Lyantonde, and Rakai*) districts. Near normal (close to average) rainfall over most parts of the region is expected.

Eastern parts of Central: (*Mukono, Buikwe, Kayunga, Buvuma*) districts. Near average rainfall conditions with a slight tendency to above normal rainfall are expected.

Central and Western Lake Victoria Basin: (*Kalangala, Kampala, Wakiso, Masaka, Mpigi, Butambala, Kalungu, Bukomansimbi, Gomba, and Mityana*) districts. Near average rainfall with a slight tendency to above normal rainfall is expected.

Eastern Lake Victoria Basin: (*Jinja, Bugiri, Busia, Mayuge, Namayingo and Tororo*) districts. Near average rainfall with a ten-



Eastern Region

South Eastern: (*Kamuli, Iganga, Luuka, Namutumba, Buyende, Kaliro, and butaleja*) districts. Are expected to have average rainfall with a tendency to above normal average.

North Eastern: (*Amuria, Katakwi, Nabilatuk, Karenga, Moroto, Kotido, Nakapiripirit, Abim, Napak, Amudat, and Kaabong*) districts. Near average with a tendency to above normal rainfall conditions are expected.

SEASONAL RAINFALL OUTLOOK (JULY 2020) OVER

From the analysis of the July rainfall outlook, the General Public is informed that the rains will continue to be heavy and above normal in several parts of the country.

Flash floods and landslides are still expected in Teso, Elegu and Karamoja Sub region.

Many parts of the country may experience strong winds and lightning; fishermen, especially on Lake Victoria, should adhere to safety and life-saving measures.

People should not be caught unprepared!

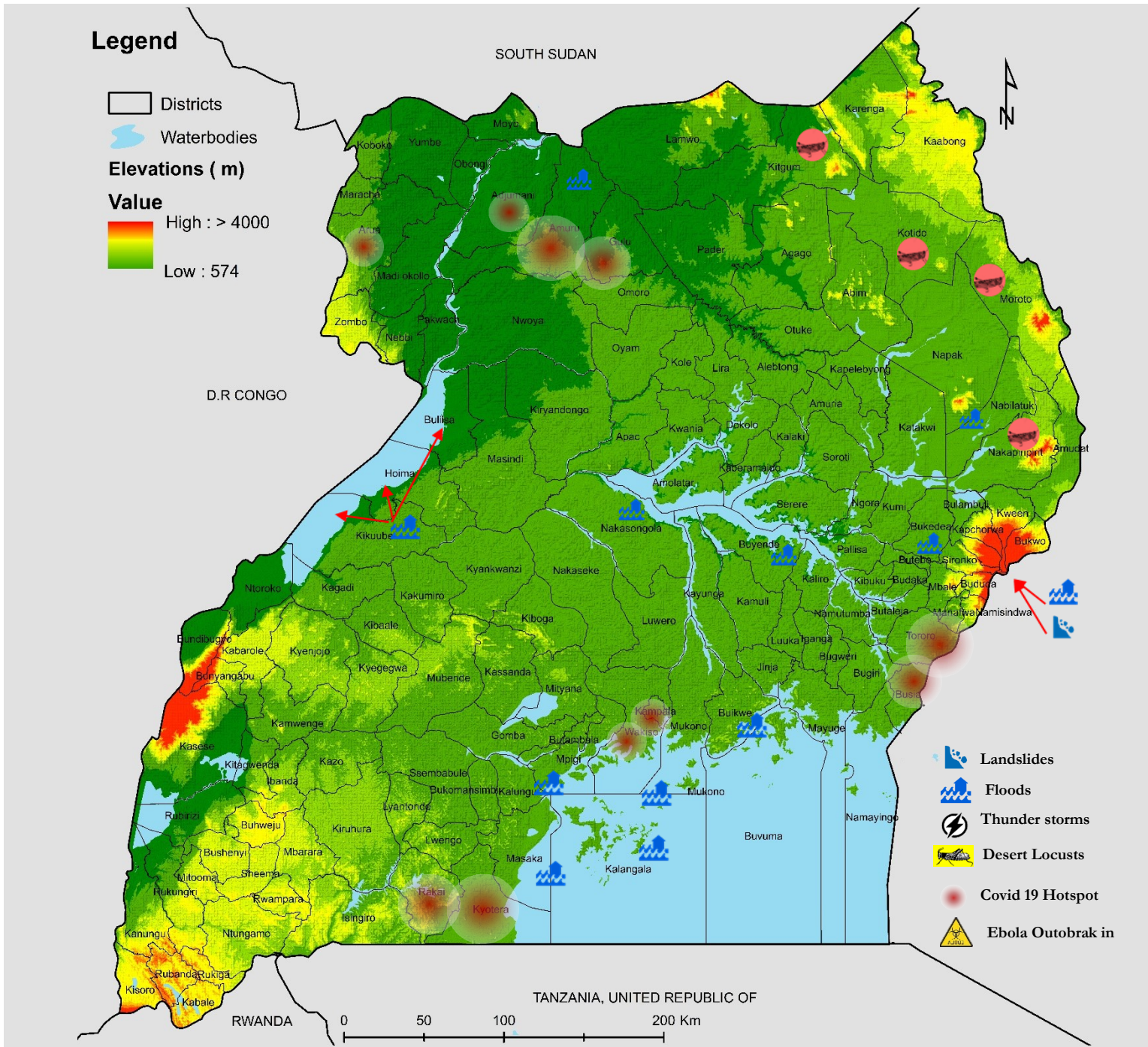
Those living near river banks and on steep slopes should shift to homes of relatives and friends in safer locations | People should clear drainage channels near their homes and workplaces



U - NIEWS

Uganda National Integrated Early Warning System – Monthly Bulletin

MULTI-HAZARD EARLY WARNING PROBABILITY MAP – JULY/AUGUST 2020



Early Warning for Hydro-Meteorological and Geophysical disasters Warning!

- According to Uganda National Meteorological Authority, the Seasonal Rainfall Outlook June to August (JJA) 2020, indicate increased likelihood of normal to above normal rainfall (enhanced rainfall) conditions over the northern, north-eastern and in most of the areas in the eastern region has been predicted. Flash floods are expected in Teso, Elegu border in Amuru district, Karamoja subregion and mudslides over Elgon subregion.
- Disaster Management Committees (DDMC), are advised to continue with sensitisation and awareness messages to the communities, update their contingency plans, and be vigilante.

Biological disaster Warning!

- As the lockdown is eased across the country. It is mandatory for the public to use face masks in public space . The public continues to be urged to keep the social distance and respect all rules issued by the Ministry of Health.

Biological disaster Warning!

- According to Desert Locust Movement Prediction for June by IGAD, Kitgum, Moroto, Kotido and Nakapiripirit were considered high risk areas for desert locust invasion. If you spot the desert locusts in your neighbourhood, please alert your nearest extension worker, parish chief or/and local leaders. You can also call us **Toll-Free on 0800177777** to report the Desert



U - NIEWS

Uganda National Integrated Early Warning System – Monthly Bulletin

DISASTER EARLY WARNINGS AND OUTLOOK - 15th JULY - 15th AUGUST 2020

BIOLOGICAL HAZARDS

The Ministry of Health continues to appeal to the general public to remain vigilant and practice safety measures. Several rules have been released, but unfortunately, the numbers of positive cases continue to increase, presently at 1,025 cases.

For safety, the public should avoid close contact with people who are visibly sick with a cold or flu-like symptoms (fever, cough, sneezing). | Avoid touching your eyes, nose, and mouth with unwashed hands | Wash your hands often with soap and running water for at least 20 seconds. | If soap and water are not available, use an alcohol-based hand sanitizer | Stay home when you experience the above symptoms to avoid spreading illness to others. | Cover your mouth and nose when you cough or sneeze with a tissue, then throw the tissue in the dustbin and wash your hands thoroughly with soap and running water. | Wear a mask if you are sick, or if someone around you is sick. | Regularly clean and disinfect frequently touched objects and surfaces such as door handles, table tops and phones.

If you feel **any of these signs and symptoms (fever, running nose (flu), cough, general weakness, difficulty in breathing or if the patient develops pneumonia)**, call Ministry of Health toll-free lines on **0800-100- 066** or **0800-203-033** to report any suspected cases of COVID-19.

Alert Level: **Moderate** → **High**

HYDRO-METERELOGICAL HAZARD - FLOODS

Flash floods are expected in (Teso, Elegu border in Amuru district and Karamoja subregion). And the raising water level in Lake Victoria, Kyoga and Albert, due to the continuous rains, is likely to cause flooding along lakeshores and in low lands. Village, Sub county and District Disaster Management committees are advised to update their contingency plans, report any emerging incident associated with weather and climate hazards immediately to the concerned authorities and to the Office of the Prime Minister on a toll free line of **National Emergency Coordination and Operations Centre, 0800177777**

Alert Level: **Moderate** → **High**

METERELOGICAL HAZARDS

Cold weather conditions over most parts of uganda

Significant decrease in temperatures (significant decrease in minimum temperature is expected in areas of south western, western, Lake Victoria basin and, Mt Elgon sub-region among others)



Likely upsurge of Asthma, Pneumonia, and common colds (flue) among others.



Declined evapotranspiration rate leading to declined flowering and fruit formation..

Alert Level: **Moderate** → **High**

GEOPHYSICAL HAZARDS - LANDSLIDES

Over Elgon subregion mudslides are expected, and we strongly advise people who live on the hills and steep slopes to be vigilant and cautious

Alert Level: **Moderate** → **High**

TRANSPORT TECHNOLOGICAL HAZARDS

Poor visibility resulting from foggy conditions

Transport Accidents: Any Location

Fire: Any Location

Alert Level: **Moderate** → **High**

Disaster statistics for the month of June 2020

TRANSPORT/ TECHNOLOGICAL HAZARDS

Fire, drowning, fatal road accidents occurred across the country.

Deaths: 43 Injured: 2 Affected: 53

Source: NECOC/OPM, Uganda Police Force, April, 2020

HYDRO-METERELOGICAL GEOPHYSICAL HAZARD

Floods | Not Reported

No of People : Affected: 0 Displaced: 0

BIOLOGICAL HAZARDS (based on Weekly EPI Bulletins by MoH)

The data presented in table consists of suspected cases. The data shows high numbers of water borne diseases such as; typhoid, Malaria, Cholera (in Moroto, Napak and Nabitruk Districts) dysentery in different parts of the country

Conditions	Cases	Deaths	CFR(%)
AFP	4	0	0.0
AEFIs	1	0	0.0
Animal bites	145	1	0.78
Bacterial Meningitis	5	0	0.0
Cholera	165	1	1.6
Dysentery	58	0	0.0
Guinea Worm	0	0	0.0
Malaria	48095	171	0.4
Hepatitis B	132	2	1.5
Measles	46	0	0.0
NNT	0	0	0.0
Plague	0	0	0.0
Other Suspected			
VHFs	1	0	0.0
SARI	174	0	0.0
Typhoid fever	994	0	0.0
Yellow fever	0	0	0.0
Anthrax	0	0	0.0
Leprosy	1	0	0.0
RR T.B	4	0	0.0

GEOPHYSICAL HAZARD

Landslide | Not Reported

Affected: 0 Displaced 0



U – NEWS

Uganda National Integrated Early Warning System – Monthly Bulletin

BRIEF UPDATE ON FOOD SECURITY AND MARKET PRICES OF SELECTED CROPS - JUNE 2020



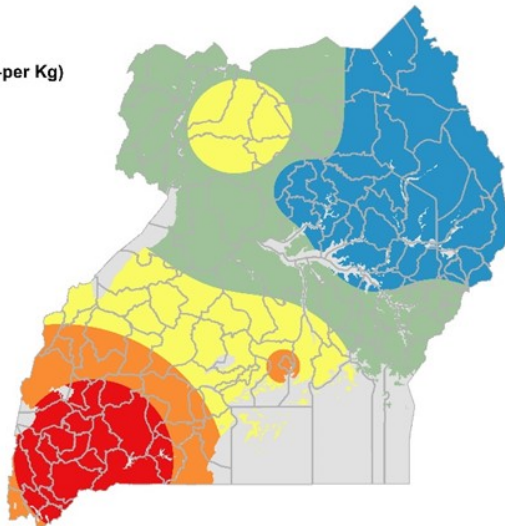
Highlights!

According to the Market price update of June 2020 by WFP, that food basket remained stable between the first and the second week of June 2020. Overall, the market price of the food basket decreased by 5 percent from May to the second week of June 2020. In general, the WFP cash transfer value covered more than 100 percent of the cost of the food basket

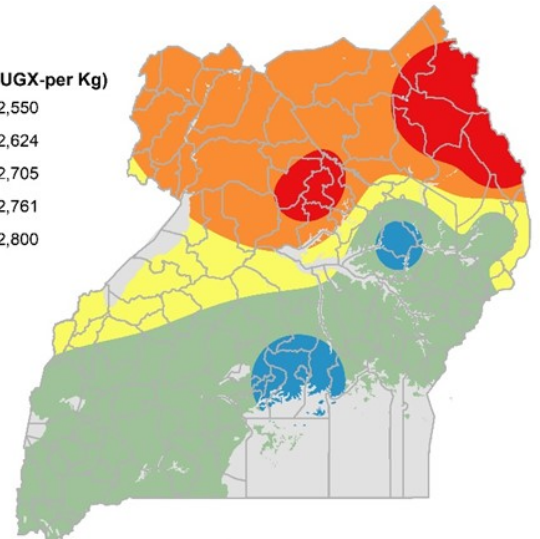
Regarding the second week of June 2020, the food basket was more expensive in West Nile refugee settlements than in the South West refugee settlements. The average prices of maize and beans remained stable between the first week and the second week of June 2020. The price of a kilogram of beans in the second week of June was however 3 percent lower than the May 2020 price. Similarly, the price of beans in the second week of June was 8 percent lower than the average price in May. The gradual reduction in prices is to a large extent influenced by first season harvests that have increased the supply of crops in the markets.

For Karamoja Markets, the average price of cereals decreased marginally from May to the second week of June 2020. The overall price of maize grain decreased by one percent whereas that of sorghum grain decreased by 4 percent during the same period.

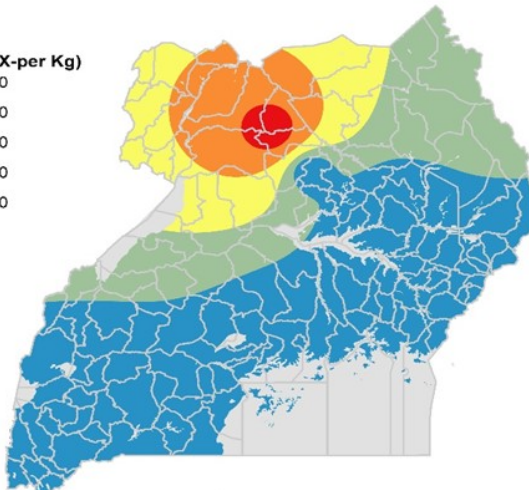
Spatial distribution of Market price of Sorghum — March 2020



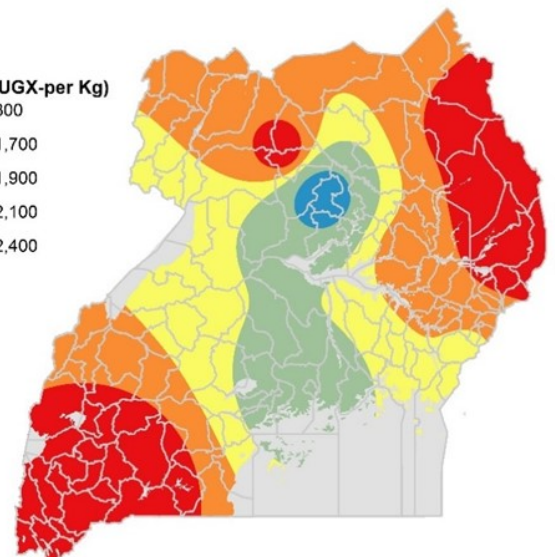
Spatial distribution of Market price of Millet Flour— March



Spatial distribution of Market price of Cassava Flour — March



Spatial distribution of Market price of Maize flour — March





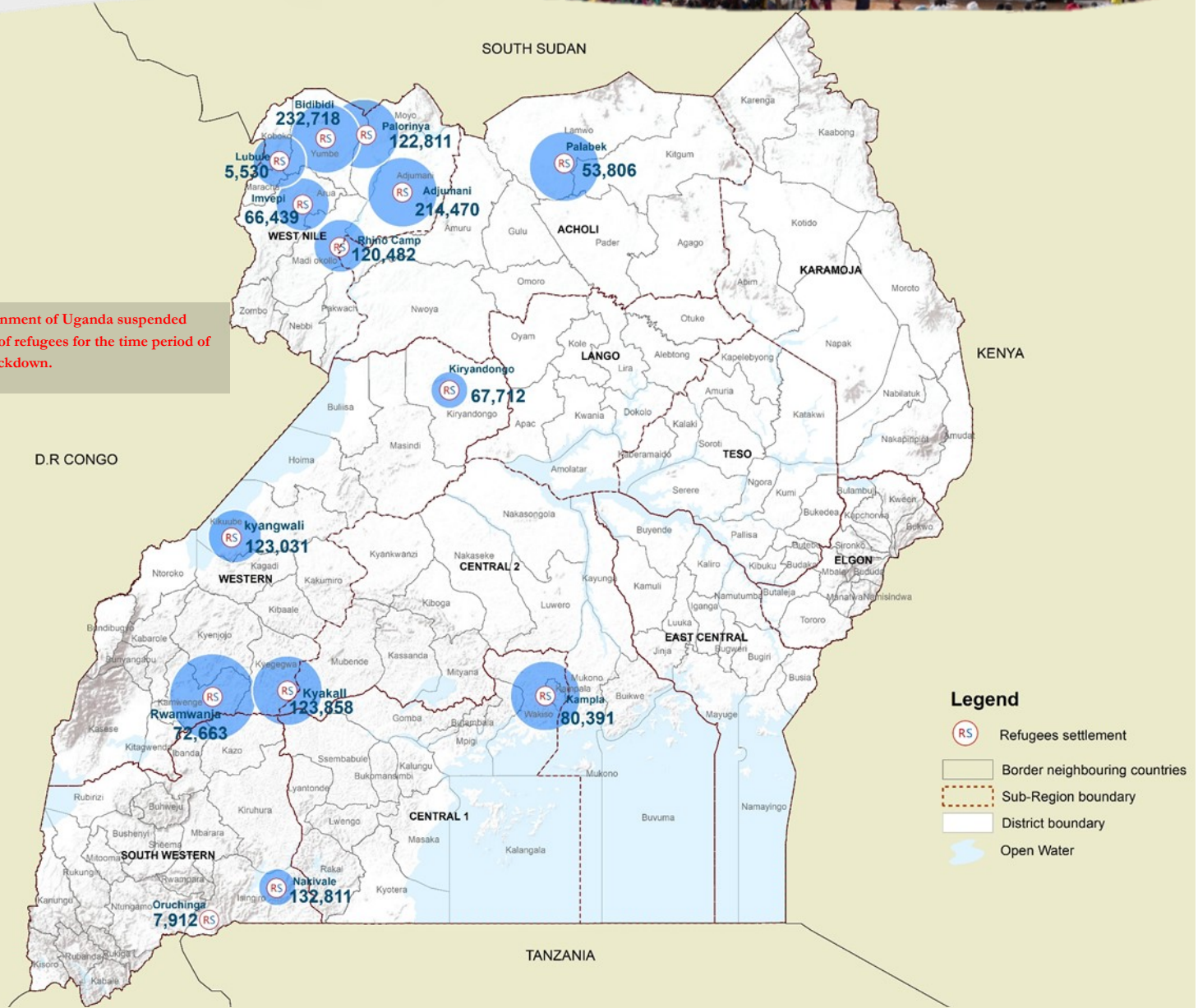
U - NEWS

Uganda National Integrated Early Warning System – Monthly Bulletin

REFUGEE STATUS OF UGANDA (as of JUNE 30th 2020)



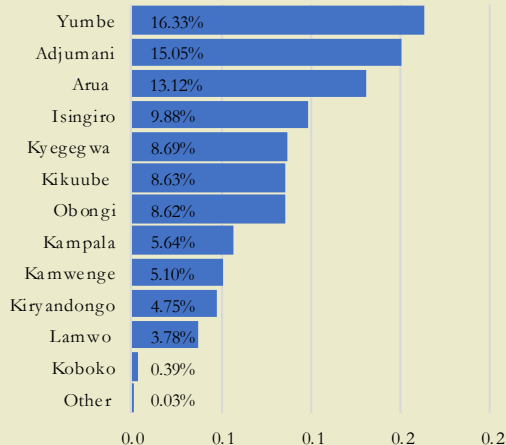
Government of Uganda suspended entry of refugees for the time period of the lockdown.



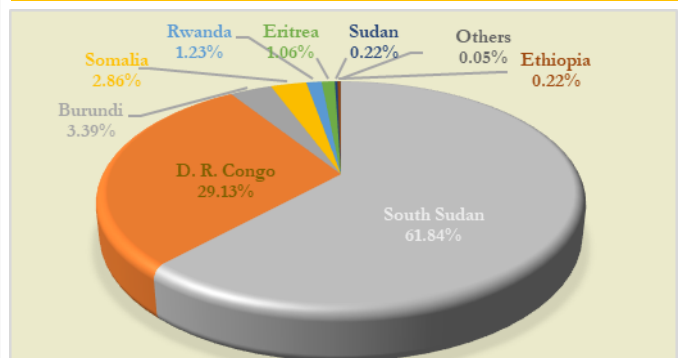
Data Source: UNHCR June 2020

Total refugees and asylum-seekers

1,425,040



Refugees by country of origin





U - NIEWS

Uganda National Integrated Early Warning System – Monthly Bulletin

National Emergency Coordination and Operations Centre (NECOC)

The Office of the Prime Minister's Department for Disaster Preparedness and Management established the National Emergency Coordination and Operations Centre (NECOC) in October 2014, with the support of United Nations Development Programme (UNDP). Uganda's National Emergency Coordination and Operations Centre (NECOC) is a 24 hour, 7- days a week central facility for early warning dissemination and coordination of emergency and crisis response and recovery action. The NECOC is established under the National Policy for Disaster Preparedness and Management of Uganda (NPDPM) with the purpose of contributing towards the functionality and characteristics that make creation of an integrated and multi-sectoral system approach to planning, preparedness and management of disasters that is fundamental to sustained productivity and socio-economic growth of the country.

Important Note!

The Uganda National Integrated Multi Hazard Early Warning System (U-NIEWS)

U-NIEWS monthly bulletin can be used to understand the conditions of crops and pasture, food insecurity, weather/climate forecast and to determine the anticipated disasters which may occur in the days to come while providing the disaster and humanitarian response status update based on monthly statistics. The information in this bulletin can be used as baseline information for planning processes while detail information may required for respective locations through relevant local and technical agencies for local level planning. For any specific details and information, relevant sources should be contacted using the NECOC website given below. In addition, Sub national level officials are encouraged to re circulate U-NIEWS among the locals including CSO's in their respective districts. The development partners are also encouraged to re circulate this bulletin among their partners, peers and colleagues.

The information provided here is shared by the respective government, UN agencies and non-governmental agencies stationed in Uganda. The Uganda National Integrated Early Warning monthly bulletin is issued on the 15th of every month to notify Ministries, Departments, Authorities, UN Agencies and General public on probable disasters which may occur without warning.

For more details:

Office of the Prime Minister (OPM)

National Emergency Coordination and Operations Centre (NECOC)

5th Floor, Postel Building, Clement Hill Road

P.O Box 341, Kampala Uganda.

Tel No. 0414 342 104

Toll Free Hotline on all Networks:

: **0800 177 777**

SMS Number: 6700

Email: info@necoc-opm.go.ug



Photo credit MoH: Part of the Mobile Laboratories commissioned by Minister of Health Dr. Jane Ruth Aceng that will aid COVID 19 response and detection of other disease

